

Apron 1 Construction Notice 2021

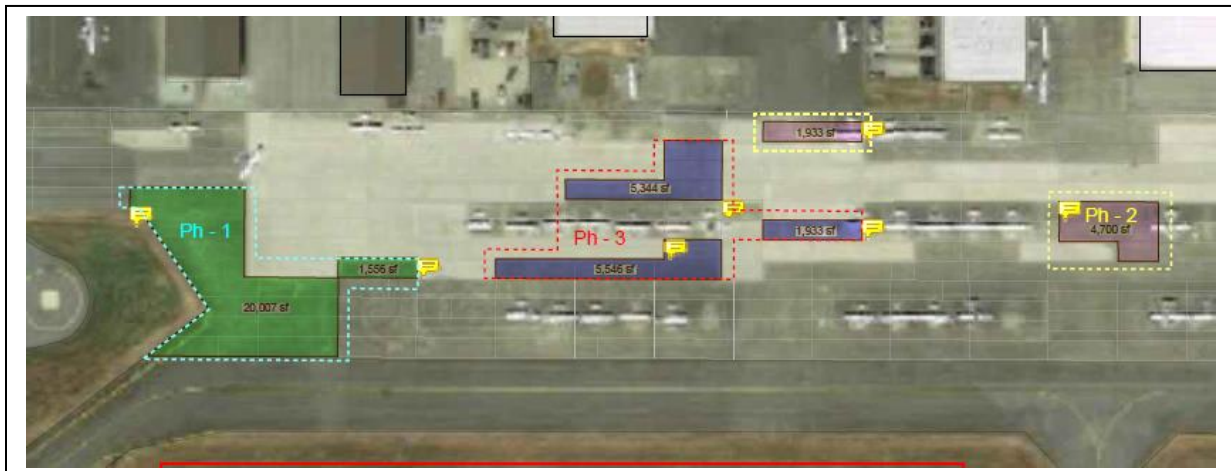
1.0 CONCRETE PANEL REPLACEMENT WORKS

Alpha Aviation Inc. would like to notify all tenants that Humphrey Construction will be completing replacement and construction on concrete panels on Apron 1. The work will involve removal of old panels and replacement with new concrete. This work is part of a phased program to improve the apron surface and reduce FOD. A priority for the repair will be in the aircraft run-up area. Mastic repair will also be completed on remaining surfaces. To minimize impact of flying school operations the apron will be open and the work areas protected by fencing. Please see diagrams below for the approximate locations. An advisory NOTAM will be issued.

2.0 SCOPE OF WORK AND TIMING

The project involves the following work to be completed in three phases:

- Removal of concrete and base preparation.
- Replacement of concrete and curing.
- Saw cutting of expansion joints.
- Mastic repair of existing cracks.
- Access will be through the King Street entrance.



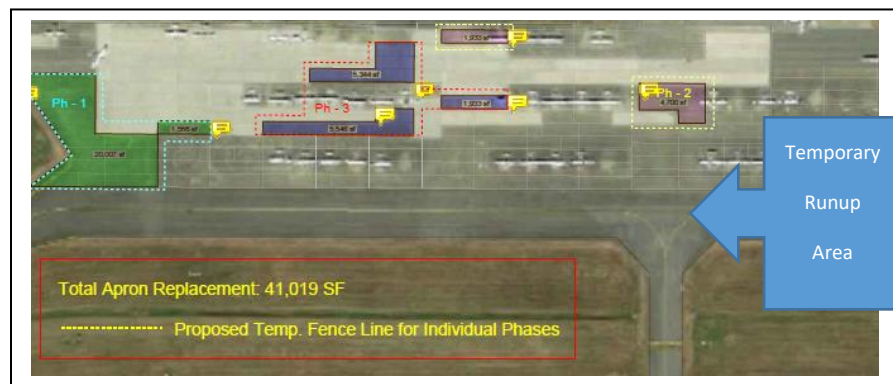
Phase 1 is expected to start April 21st and be complete by May 31st. Phase 2 and 3 will follow with final completing by July 15th, 2021.

3.0 AIRSIDE SAFETY AND ESCORTING REQUIREMENTS

Each flight school will be briefed separately on the construction phasing and temporary apron operation and relocation requirements.

The construction contractor will have a site supervisor with a current AVOP and will provide escort to all delivery trucks. Alpha Aviation will provide communications with the tower as required. The Contractor will work closely with Alpha Aviation to maintain airside security at the access point used by construction equipment/personnel. The contractor will submit a safety plan to Alpha Aviation Inc. prior to commencing work.

During Phase 1 work of the project in the current run-up area all run-ups for aircraft departing on taxiway Alpha are to use the taxiway Bravo area. During Phase 1 please note that taxiway Golf will be restricted slightly.



4.0 SAFETY BARRICADES AND HAZARD LIGHTING

The active work areas will be fenced off using medium height fencing and appropriate marking. Alpha Aviation works directly with the fence rental company to ensure appropriate access and operational control during periods of construction.

