



# Runway 30 Project Implementation

REACTIVATION AND RELATED PROJECTS

ALPHA AVIATION PROJECT 1601

# Background

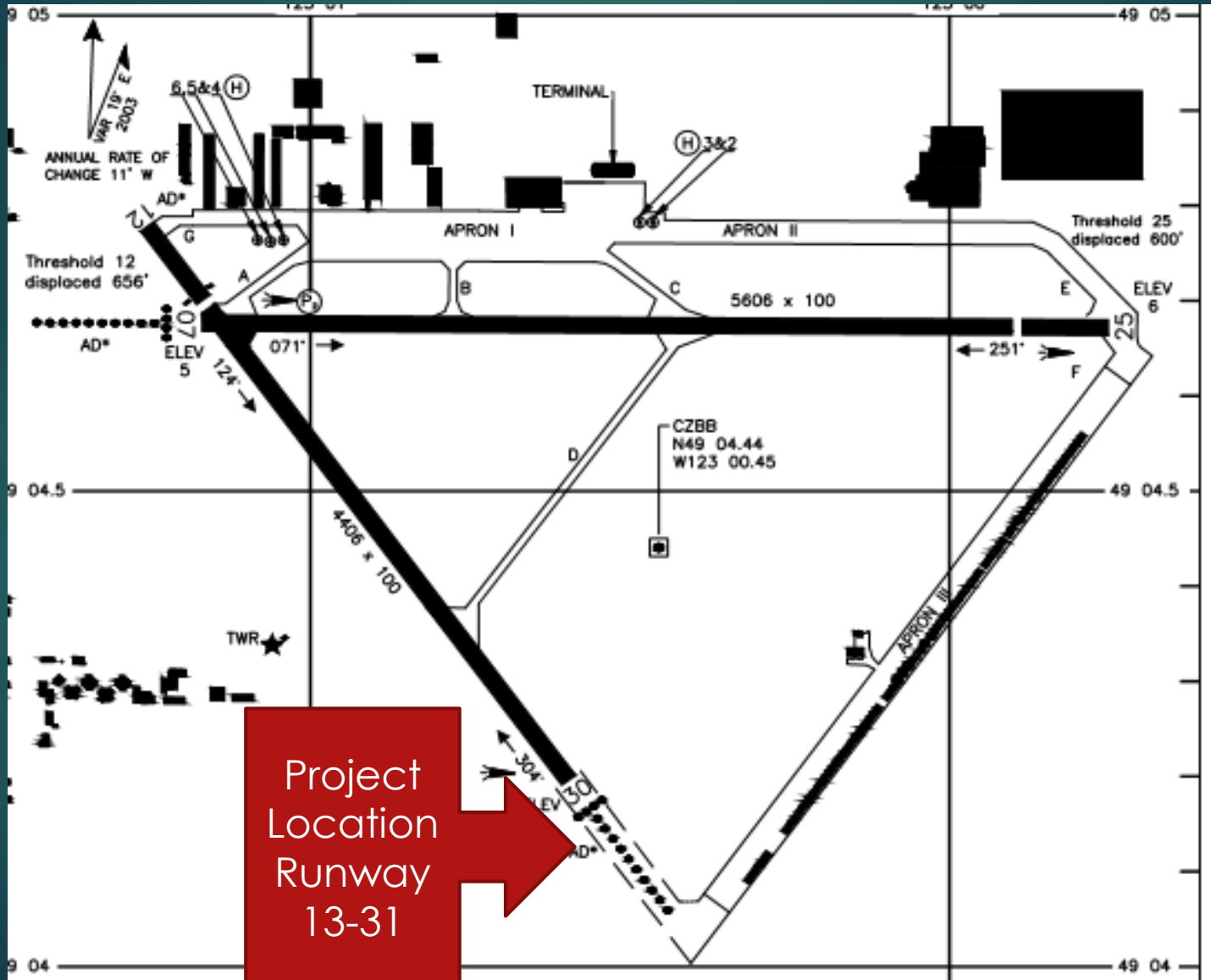


- ▶ PAPI installed on 07
- ▶ Runway 12-30 reactivated to the North for a total length of 4406 ft.
- ▶ Apron 1 and Apron 2 repaired-Taxiway Golf established
- ▶ New LED lights installed on 12-30
- ▶ An orientation change is required for to 13-31
  
- ▶ *Reactivation of the south end will increase runway length to 5605 ft.*

# Existing Runway Facilities

3

CZBB  
Mar 7 2017



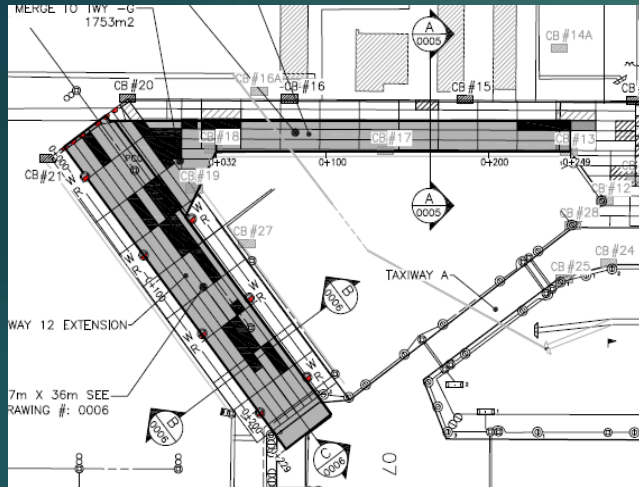
# Runway 30 Business Case

- ▶ **Safety**-increased length to 5605 ft.
- ▶ **Reduced Noise**-reduce circling
- ▶ **Straight in approach**-Separation from YVR traffic
- ▶ **Runway Heading adjustment**-magnetic north
- ▶ **Operational flexibility**-jet and training aircraft, maintenance and access to Apron 3
- ▶ **Improve Visual Aids**-PAPI and LED lighting
- ▶ **Signage and Painting**-07-25 and 13-31

# 12-30 Reactivation-North End Published and in service

5

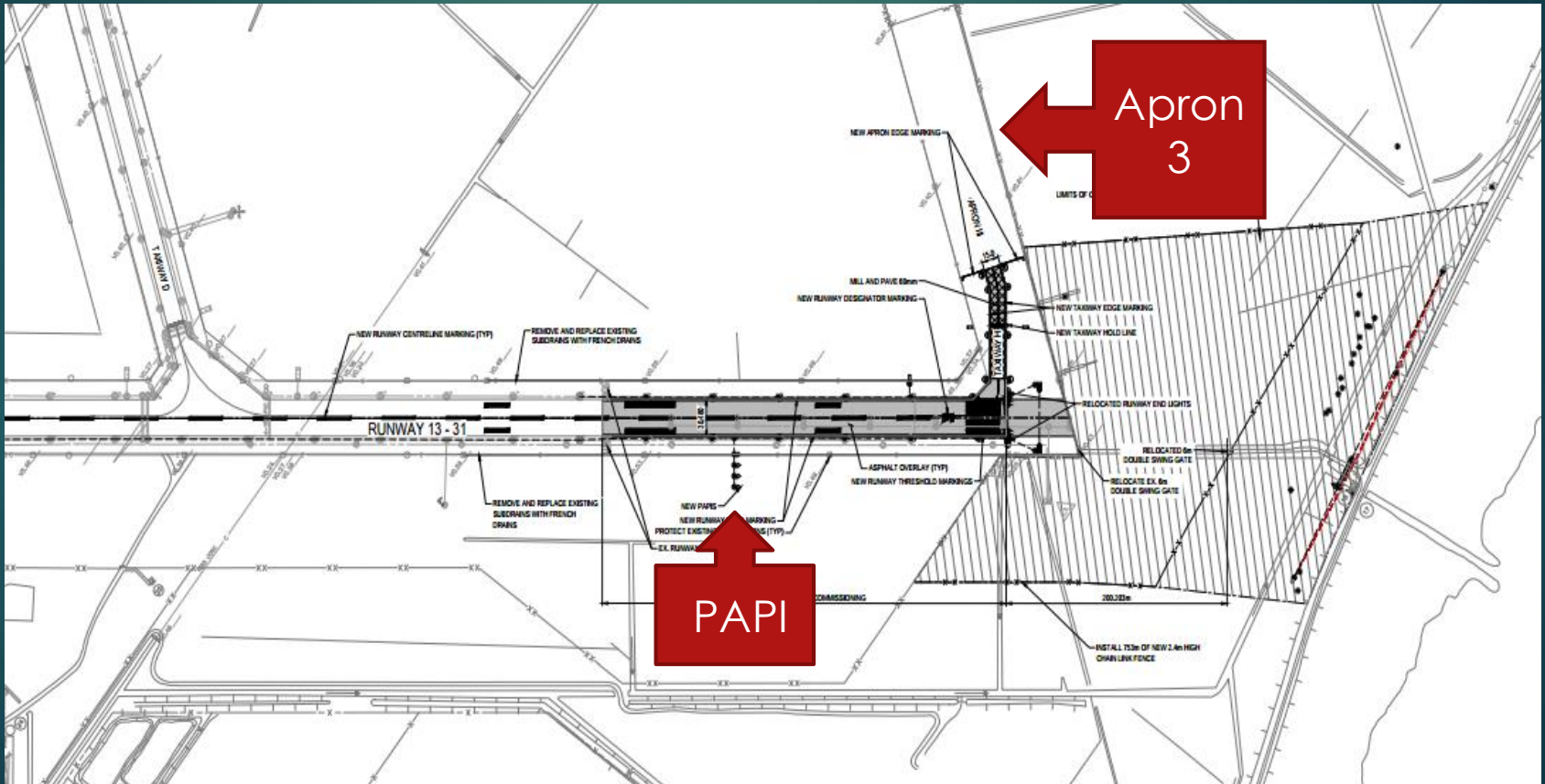
CZBE  
Mo7



# 5605 ft (Overlay)-taxiway to Apron 3-New PAPI

6

CZBB  
Mar 7 2017

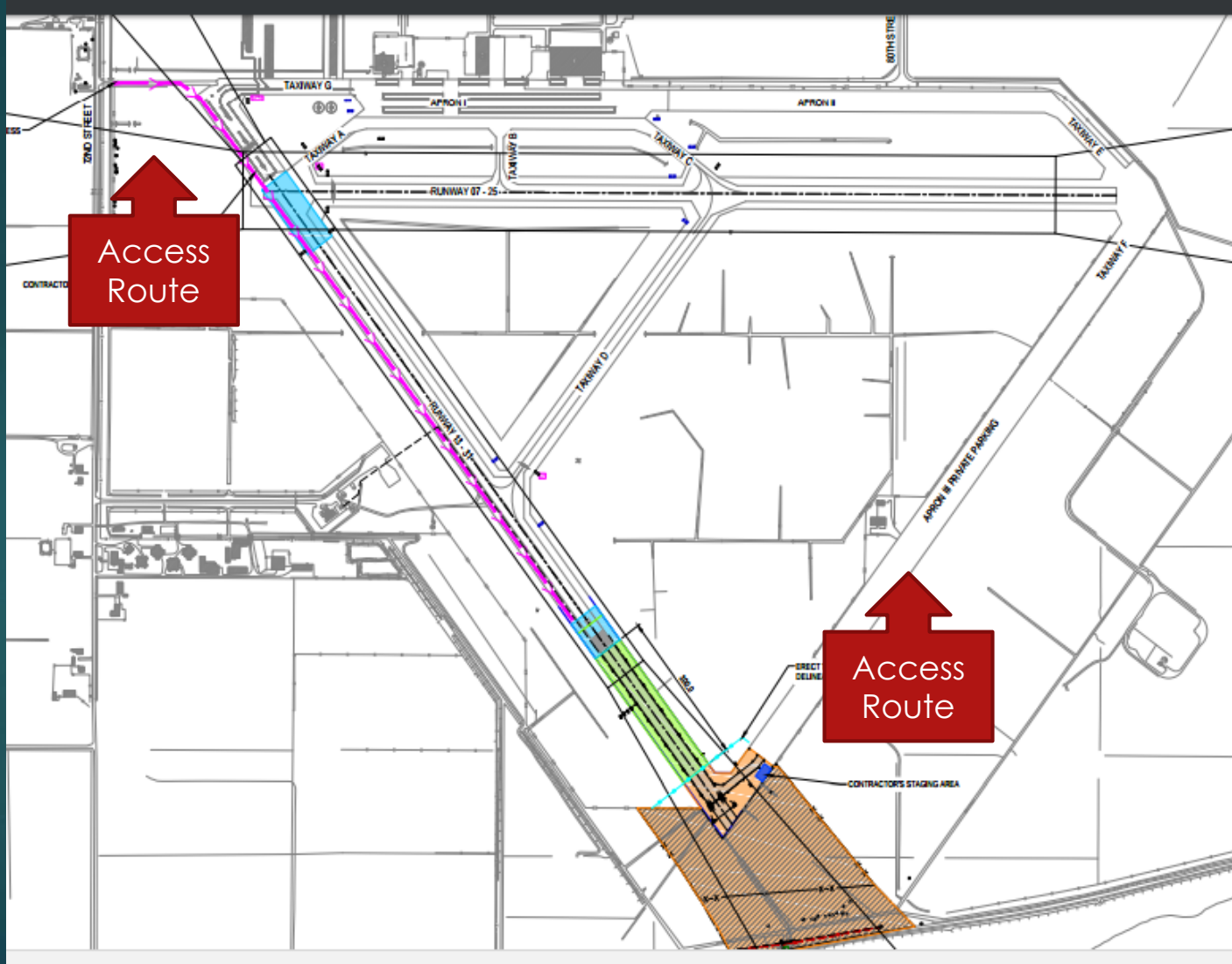




# Plan of Construction Operations

- ▶ Escort provided by Alpha Aviation
- ▶ Maintain flying activity
- ▶ 12-30 to be open for wind
- ▶ Communication with tower through Alpha Escort
- ▶ Displaced thresholds
- ▶ NOTAMs require 72 hour notice for closures

# Project Orientation

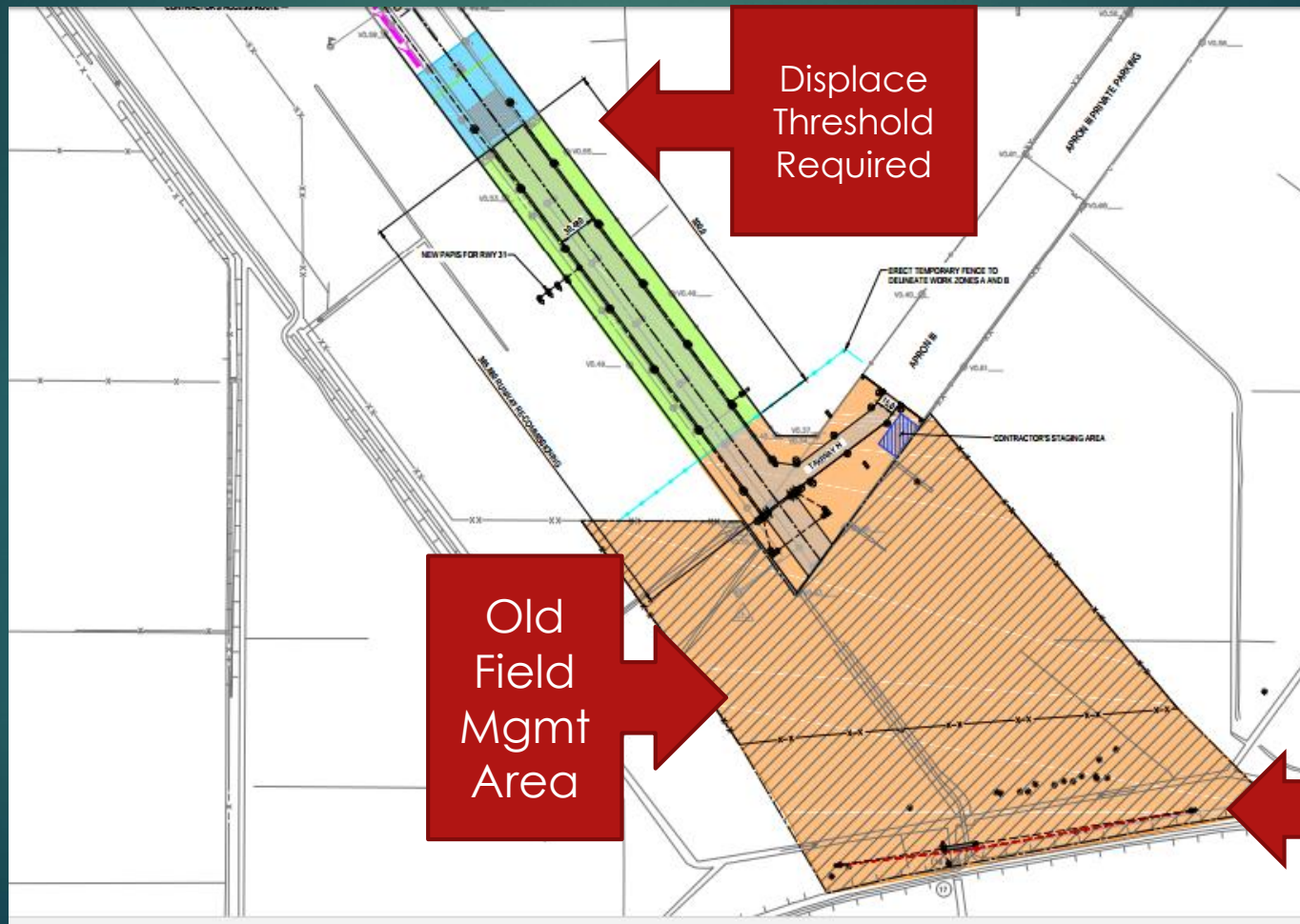




# Plan of Construction Operations

9

CZBB  
Mar 7 2017



# New Electrical Cabling-LED Lighting-PAPI and RTILs

10

CZBB  
Mar 7 2017





# New Runway 31 LNAV Approach

12

CZBB  
Mar 2017

